

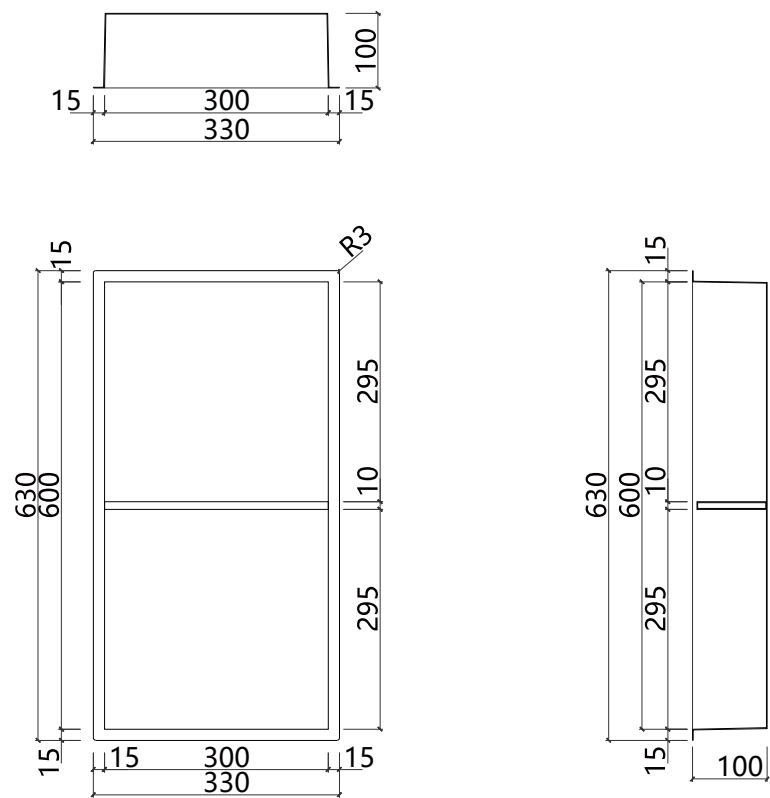
INSTALLATION MANUAL

Please read the instnction carefully before using.

DESCRIPTION:

- Product features
- ◆ Material : Stainless steel 304
 - ◆ Colors: PVD brushed gold, PVD brushed rose gold, PVD brushed gunmetal, Brushed steel, Matt black, Matt white
 - ◆ Wall type: Solid wall construction
 - ◆ Suitable for us in wet areas
 - ◆ Where to use: renovation, new construction
 - ◆ Easy to clean

INSTALLATION DIMENSIONS



SAFETY NOTES:

Gloves should be worn during installation to prevent crushing and cutting injuries.

INSTALLATION INSTRUCTIONS:

- ◆ The plumbing codes applicable in the respective countries must be observed.

Prior to installation, inspect the product for transport damages. After it has been installed, no transport or surface damage will be honoured.
- ◆ Before installation, the wall of the installation area should have been reserved, it cannot to be the bearing wall and the wall thickness no less than 25cm. The reserved installation position (opening size) and the overall size of the product differ by 10mm in width and length. The following dimensions are reference data, please measure and calculate according to the actual product size.
- ◆ When installing, wipe and clean the surface of the niche and the reserved installation position on the wall. Put glass glue on the gap between the back of the edge of the niche and the wall, and snap the niche into a reserved installation position on the wall. The frame of the niche can be covered on the wall tiles.
- ◆ Products containing chlorine or acids, such as cement residue remover or similar, often contain aggressive chemicals. These can corrode the surface of the product. Bleaches or silver cleaning agents are also unsuitable for care. When using tile and joint cleaners, the product must subsequently be cleaned with adequate amounts of clear water. The product cannot be cleaned with abrasive cleaners and / or pointed or abrasive objects. Clean brushed or ground surfaces always parallel to the grind instead of across it.
- ◆ It is not recommended to permanently place products with corrosive steel or aluminum bottoms directly on the stainless steel.

IMPORTANT NOTES:

Do not use silicone containing acetic acid!

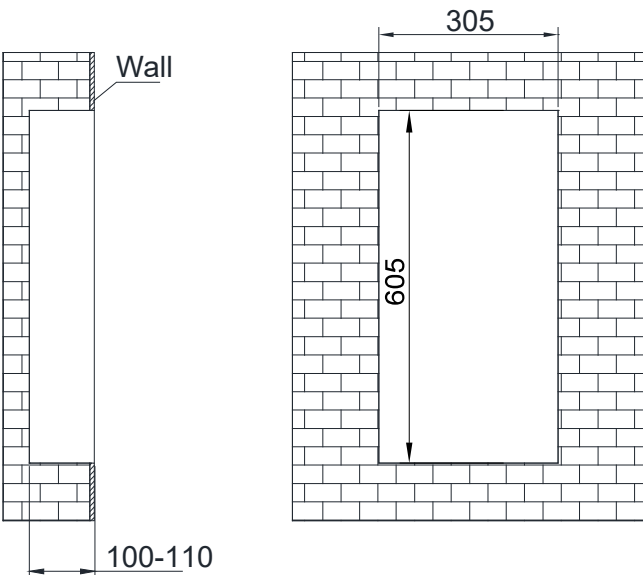
CLEANING AND MAINTENANCE:

Iron-free cleaning materials should generally be used for cleaning stainless steel. We recommend:
A soft cloth and / or a leather rag
A sponge (Caution! No scouring sponge or steel wool, etc.)
A special stainless steel cleaner or another suitable mild cleaning agent.

Please do not hesitate to contact our Sales & Service Depar tment for any questions regarding cleaning recommendations.

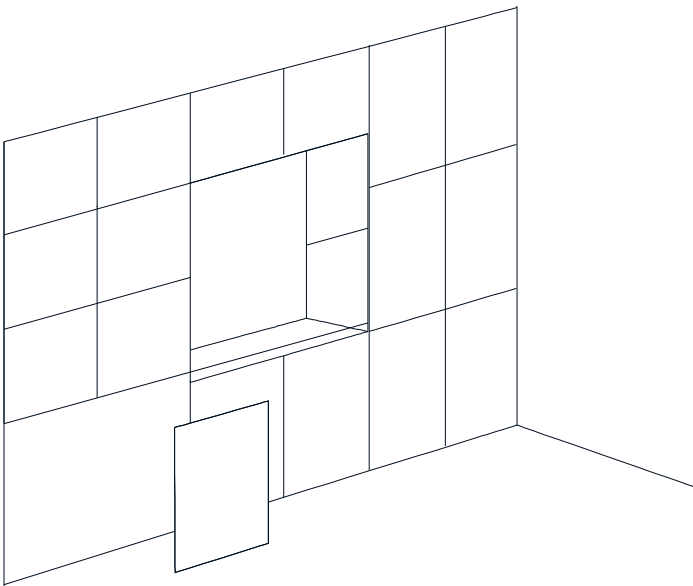
Stap1

Dig a hole in the wall where the niche is to be installed. For dimensions, refer to the technical drawing shown below.Keep an extra 5 mm space for the notch. Length and width. Check your product frequently.



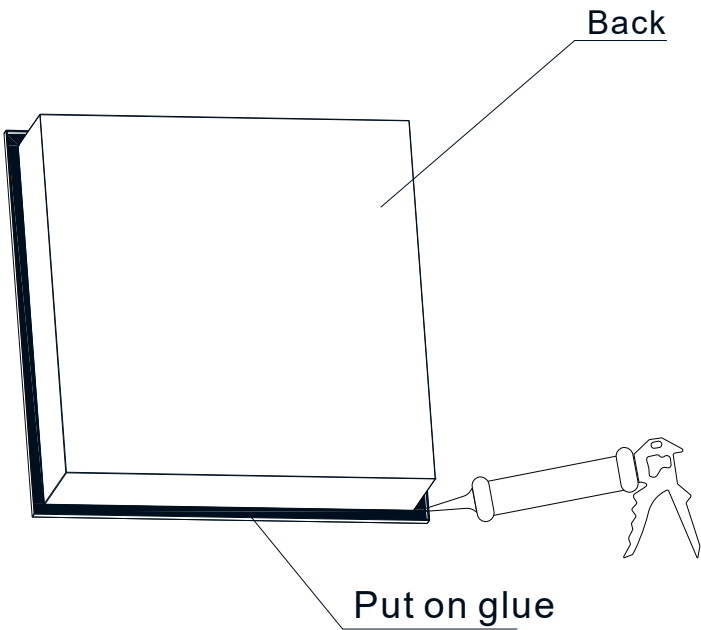
Stap2

Tiling the wall around the recessed nicheRecesses of recessed niches.



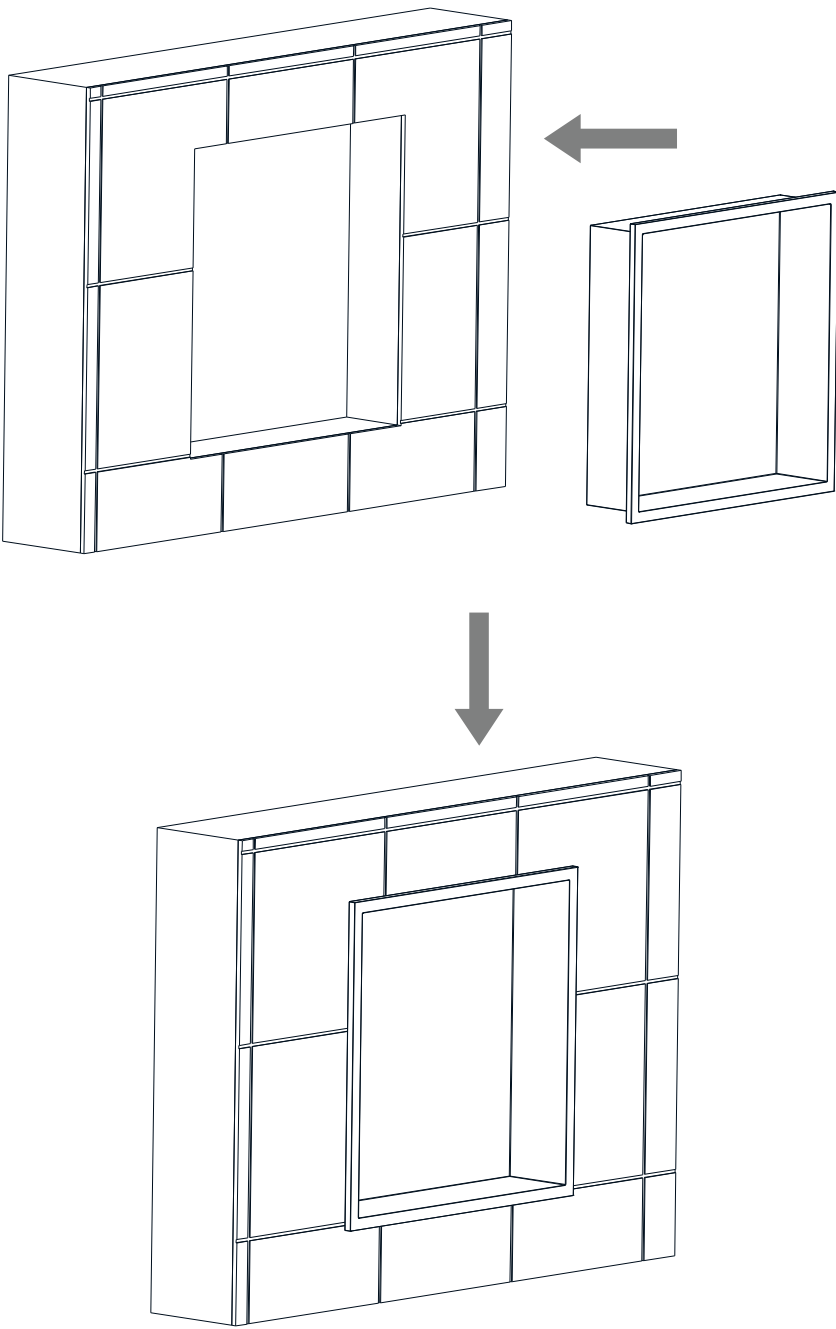
Stap3

Seal the edges of the back of the mounting niche



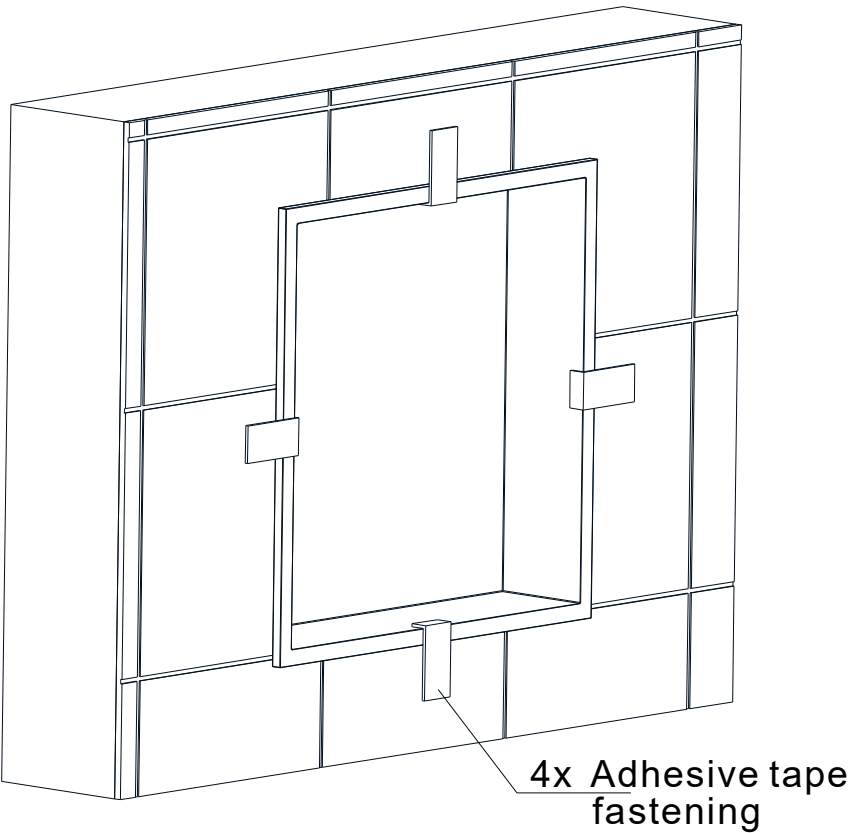
Stap4

Install niches in wall recesses.



Stap5

Use adhesive tape to adhere the niche to the wall and tear off the tape after the glue has been fixed for 24 hours.



Stap6

Installation is complete.

